



A Division of Connexon

The E911 Experts.



Introducing the New Service Provider Emergency Gateway

Scalable, multi-tenant E911 management solution for BroadSoft BroadWorks.

Key Features

- Automatically associates tenant IP devices to locations when they place emergency calls from the corporate network.
- Supports on-site phone mobility.
- Delivers 911 calls, custom email alerts, and screen pop notifications to tenant security personnel.
- Advanced reporting and monitoring functions.
- Seamless interoperability with 911 Enable's Emergency Routing Service for call delivery to the Public Safety Answering Point.
- Carrier-grade design with NEBS level 3 redundant hardware, capable of supporting up to 1 million devices.
- Additional features include 911 misdial protection, support for multiple dial plans, active test mode, and more.

911 Enable's Service Provider Emergency Gateway (SP-EGW) is a multi-tenant platform that enables carriers and service providers using BroadSoft BroadWorks to offer automated E911 management from the cloud.



Benefits for service providers

Expand your service offering, differentiate yourself in the marketplace, and secure customers concerned with E911.

Lower costs associated with initial phone provisioning and updating moves/adds/changes.

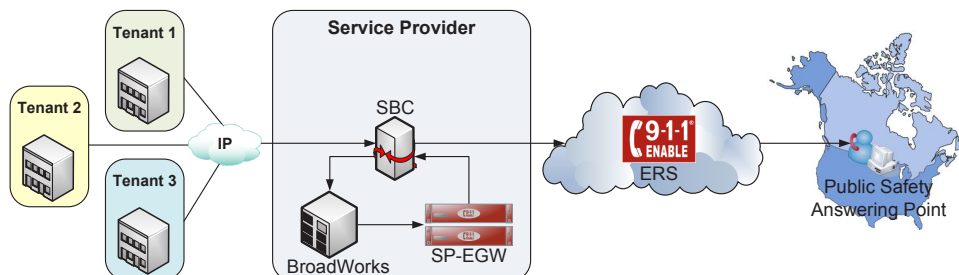
Reduce your liability risk with lower human error, and simplify compliance with FCC and state E911 regulations.

Benefits for tenants

Advanced E911 service and feature set previously only available to organizations with on-premises IP-PBXs.

Transparent E911 service that keeps users safe.

Flexible, reliable support for the most complex deployments.



Contact 911 Enable today for more information.

www.911enable.com/sp-egw • 1-866-661-3218 • sales@911enable.com